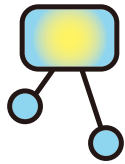


2C

On The Road

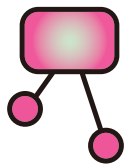
Sales Presentations
Meetings & Conferences



How many people are attending your presentation?

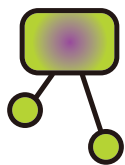
The more people you have the bigger the screen you'll require. A 32" Work IT is ideal for a group of 4 or 5.

A group of 20 or 30 will definitely require a Show IT or Present IT.



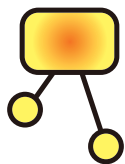
What are you presenting?

If you will be showing a lot of text and spreadsheets then it is really important that you are able to control the light in the room (can you make it dark?) and have a bright projector. Otherwise it will be very difficult for your audience to read what you are presenting.



Choose your projector?

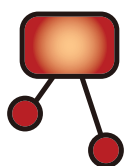
One general rule – the bigger the image the brighter the projector needs to be.



Choose your screen

- Work IT for very small groups (4-5) around a table
- Show IT for small groups (up to 20) can be positioned on floor or table
- Present IT for mid sized to large groups (up to 50) is best positioned on the floor.

Model	Product Code
Work IT	2C481 - 32" 4:3
Show IT	2C406 - 60" 4:3 2C407 - 80" 4:3 2C408 - 60" 16:9 2C409 - 80" 16:9
Present IT	2C401 - 1520 x 1520 2C402 - 1720 x 1720 2C403 - 2030 x 2030



What else will you need?

- Laptop
- Cables for connecting projector to the laptop

For more information on 2C:

logon to www.2cdisplays.com.au or call 1300 730 025